

HTLV-I (MT-2 Strain) Infected Cell DNA

Catalog Number: 08-711-000

Lot Number: D0108

Product Description: Human T-Cell Lymphotropic Virus type I (MT-2 strain) infected MT-2 cell DNA PCR control.

Unit Size: 100 μ l at 50 ng/ μ l (5 μ g)

Suspending Buffer: 10 mM Tris, 1 mM EDTA, pH 8.0

QUALITY CONTROL DATA

DNA Quantitation: DNA concentration was determined by fluorometry.

PCR Analysis of DNA Control:

PCR analysis was performed on infected cell DNA using primers specific to the rex and tax genes of HTLV-I. The reaction produced a 138 bp fragment. The PCR product was visualized on a 1.0% agarose gel using EtBr staining. A representative gel photograph is shown below.

PRODUCT DETAILS

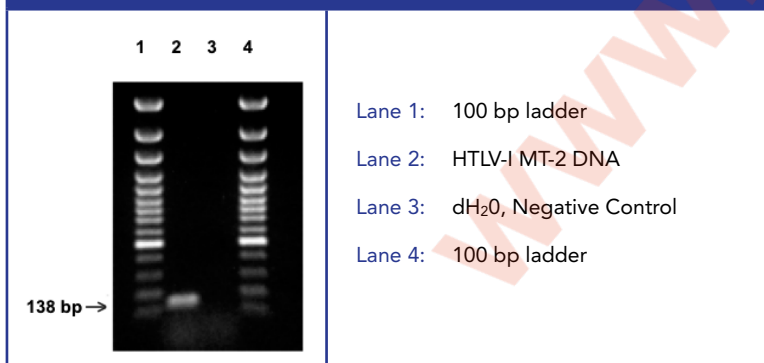
Shipping and Storage: This product is shipped frozen on dry ice. **Store at -20°C upon receipt.** Avoid multiple freeze-thaw cycles as product degradation may result.

Recommendations: Upon thawing, centrifuge the vial for a few seconds to remove residual droplets from the lid.

Safe Handling Recommendation: The DNA extraction procedure used has been shown to eliminate the infectivity of most viruses and bacteria; therefore, this product is not considered biohazardous. However, this lot was not specifically tested for infectivity and should be handled in accordance with Good Laboratory Practices and any applicable local guidelines.

This product is for research use only.
Not for use in diagnostic procedures.

HTLV-I (MT-2 Strain) Infected Cell DNA Gel Photograph



Quality Control

01/10/2013

Date